

🕒 Completion - DEC 2026

Armani Beach Residence

Palm Jumeirah



Arada



Rustam Kakharov

Dubai, United Arab Emirates

🔑 Verified Agent

Phone 971585869577


Email rustam@allegiance.ae

Website

Instagram: rus_kakharov




Armani Beach Residence

 Furnishing - Optional furnished

 Parking -

 Floors - G + 8floors

 Service charge - 35-40 AED/sqft

Project general facts

Armani Beach Residences at Palm Jumeirah once again brings together two of the world's most renowned cultural figures: Giorgio Armani and Tadao Ando. With a partnership stretching back over two decades, Giorgio Armani and Tadao Ando have been united by their mutual respect and admiration. Brought together by master developer Arada, Armani Beach Residences at Palm Jumeirah is the first and only time that these masters of their craft have collaborated on a residential offering.

Setting a new standard for ultra-luxury living, Armani Beach Residences at Palm Jumeirah is located on the shores of Dubai's famous manmade islands, one of the world's most exclusive residential neighborhoods. Enjoying sweeping, panoramic views of the Arabian Gulf as well as Dubai's famed skyline, Armani Beach Residences at Palm Jumeirah is designed to achieve harmony between architecture, the surrounding seascape and the senses.

The magnificent elevated entry experience sets the tone, providing residents with extravagant ocean views from a range of angles. Throughout the building, the interplay of light and shadow amplifies a series of stylish design elements, including the overhanging arch and the many water features and pools.

Alongside its exemplary architecture and seafront setting, Armani Beach Residences at Palm Jumeirah is distinguished by a set of amenities like no other, allowing residents to experience a truly ultra-luxury lifestyle. This collection of high-end facilities includes a premium residents-only spa, a function room, cigar lounge and landscaped deck area, as well as a private beach. Exquisite interiors at these amenities merge with limited edition pieces individually designed by Giorgio Armani himself to create a unique style with a distinct and sophisticated aesthetic.

Finishing and materials

All living spaces and bedrooms contain highend fittings provided by Armani/Casa, including designed kitchens and bathrooms, wallpaper with metal profiles, metal skirting and spotlights. In addition, all owners may choose between a light and dark overall design palette for their furnishings. The residences contain a circular or linear foyer, a signature Armani concept, which acts as a transition between the public area and the private space of the apartment and generously proportioned heights, reaching at least 3 metres for living areas.

All bathroom fixtures and fittings provided by the Armani/Casa Island Collection. The Armani/Casa bathroom collection is the expression of elegant simplicity and total harmony, both quintessential of Giorgio Armani's unmistakable style, captured in the bathroom space

Kitchen and appliances

Residences contain open display kitchens that feature joinery work and accessories from Armani/Casa's Checkers

Collection for the light palette and Bridge Collection for the dark palette. Closed kitchens come with an oven, fridge/freezer, dishwasher, washing machine/drier.

Furnishing

Unfurnished apartments & Optional furnishing Armani branded for presidential suits

Location description and benefits

Palm Jumeirah is a luxurious community located on an artificial island that is shaped like a palm tree, with a trunk, fronds, and a crescent-shaped breakwater that surrounds the island.

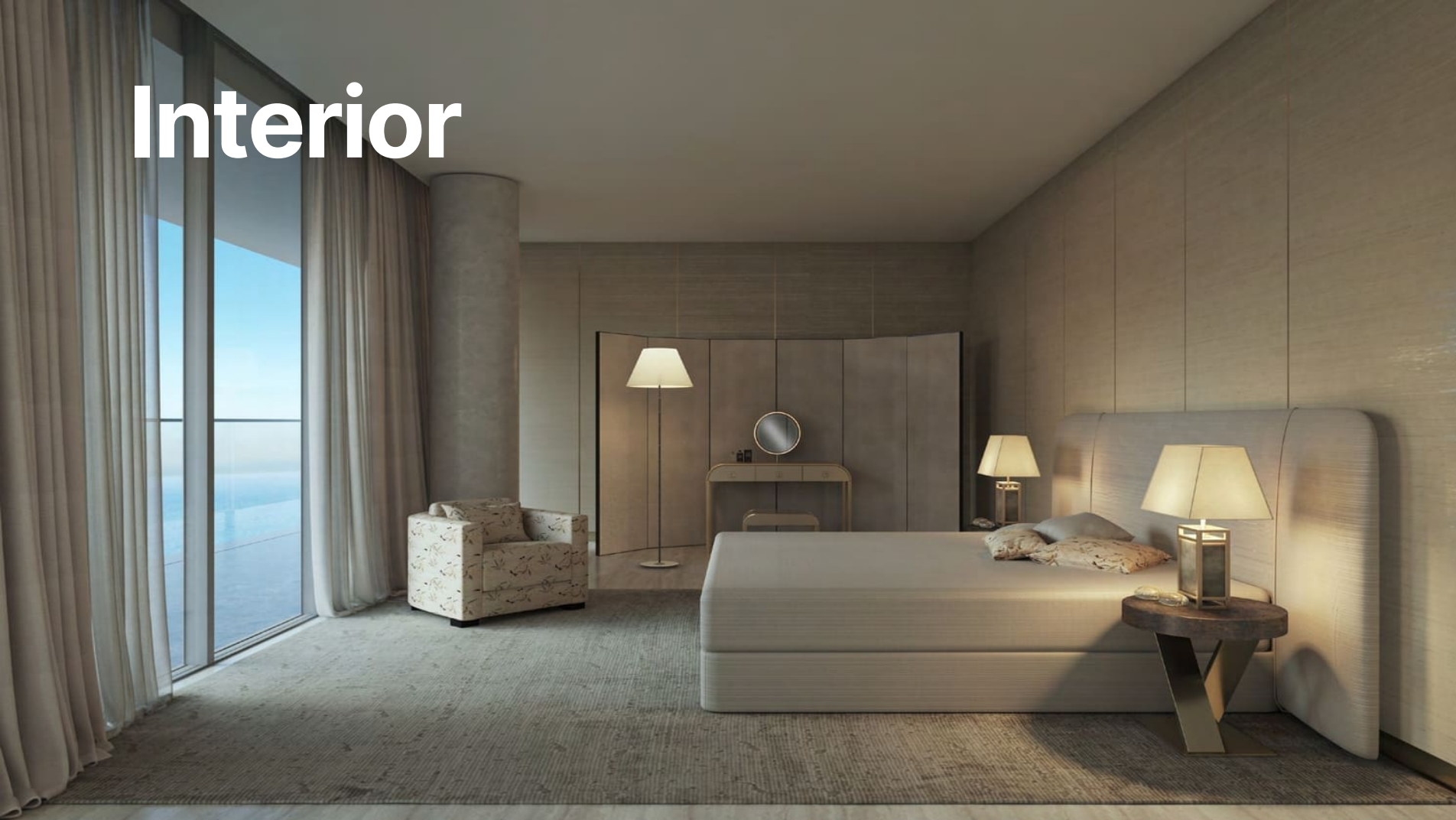
The community is home to a variety of high-end residential properties, including apartments, villas, and townhouses, as well as some of the most luxurious hotels and resorts in Dubai. The community is known for its stunning views of the Arabian Gulf, its pristine beaches, and its world-class amenities.

In addition to residential properties and hotels, Palm Jumeirah is home to a range of retail and dining options, including the iconic Atlantis, The Palm resort, which features an array of restaurants, bars, and entertainment venues. The island also boasts a range of recreational activities, including water sports, beach clubs, and golf courses.

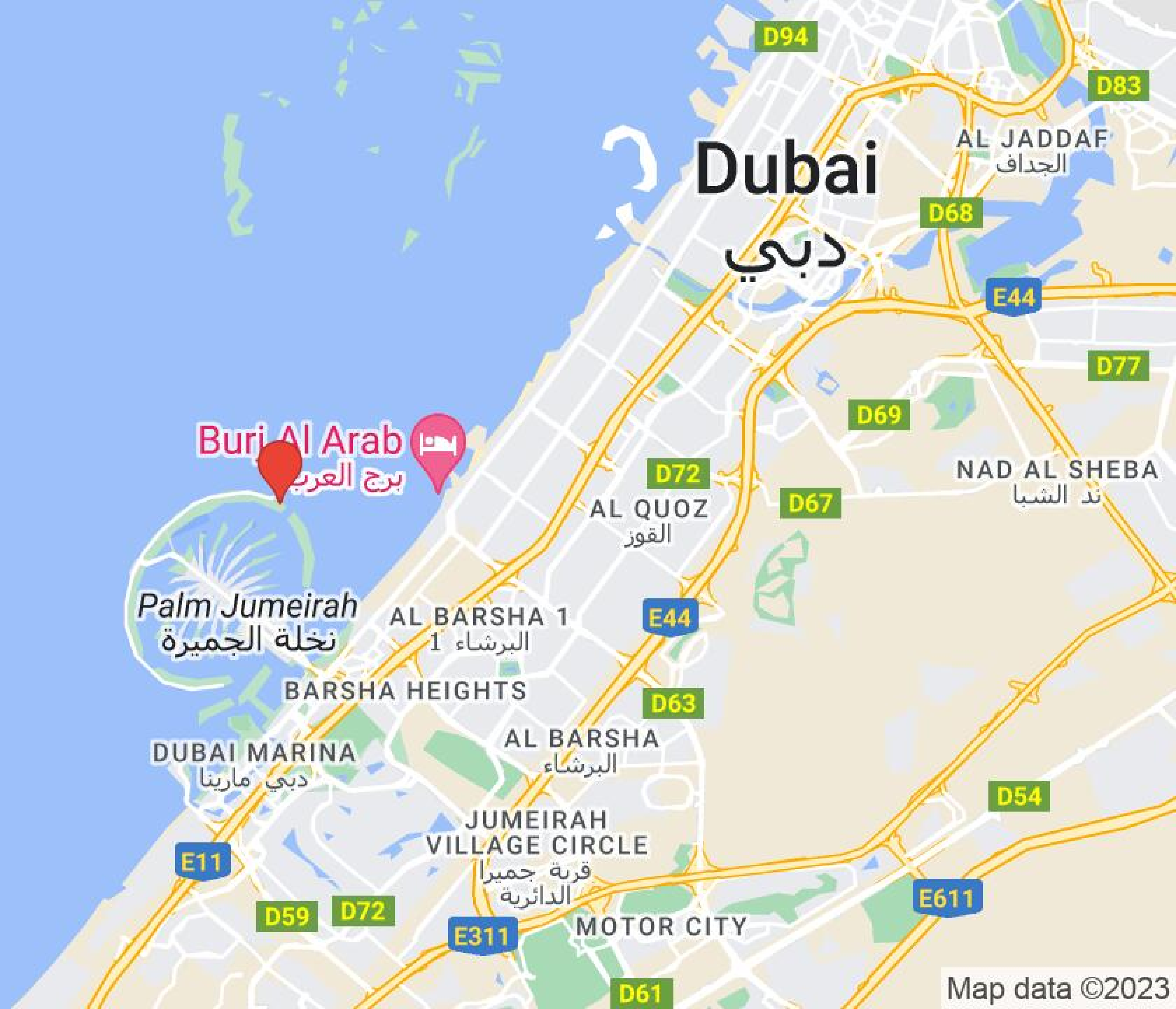
Architecture



Interior



Location



[Open location in Google Maps](#)

Map data ©2023



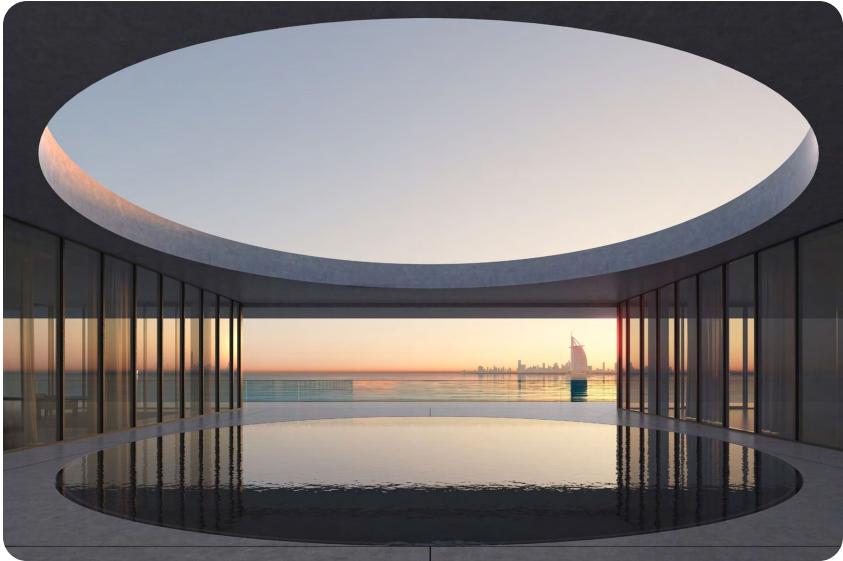
Facilities



Gym
Image for general understanding



Sauna & Ice-bath
Visualisation from developer



Indoor Swimming Pool
Visualisation from developer



Lushly Landscaped Deck Area
Visualisation from developer



Large-scale Infinity Pool
Visualisation from developer



Separate Children’s Pool
Image for general understanding



Cigar Lounge
Image for general understanding



Private Beach
Image for general understanding

Facilities



Movie Theatre

Image for general understanding



Children's Playroom

Image for general understanding

Payment plan

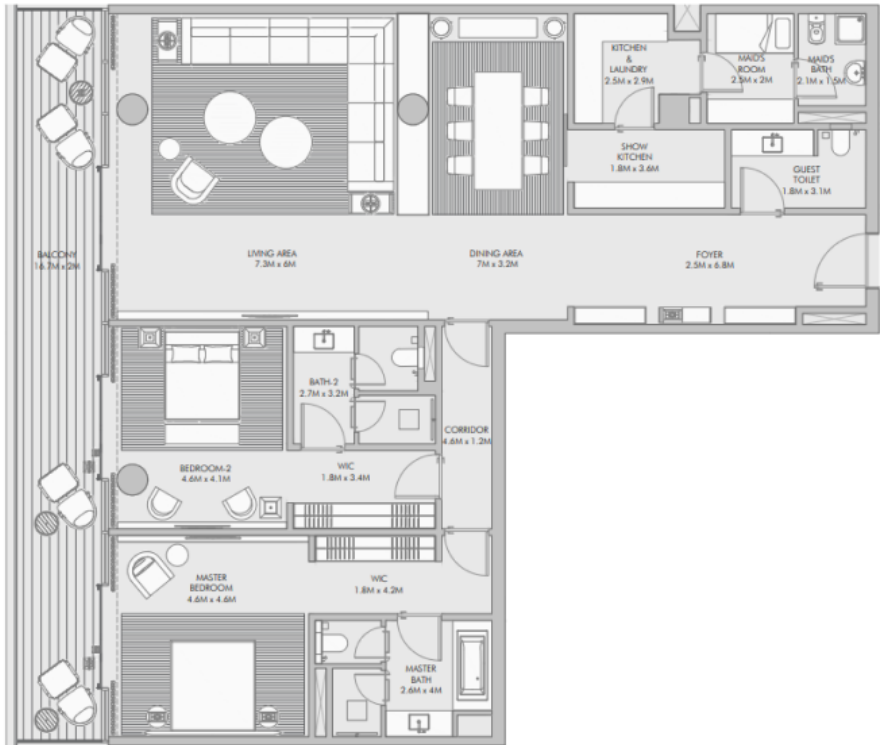


Payment Plan

25% payment	On booking
35% payment	During construction
40% payment	Upon Handover

Condition for the unit resale	Not specified
-------------------------------	---------------

Typical units and prices



Apartments

2 bedroom

FROM

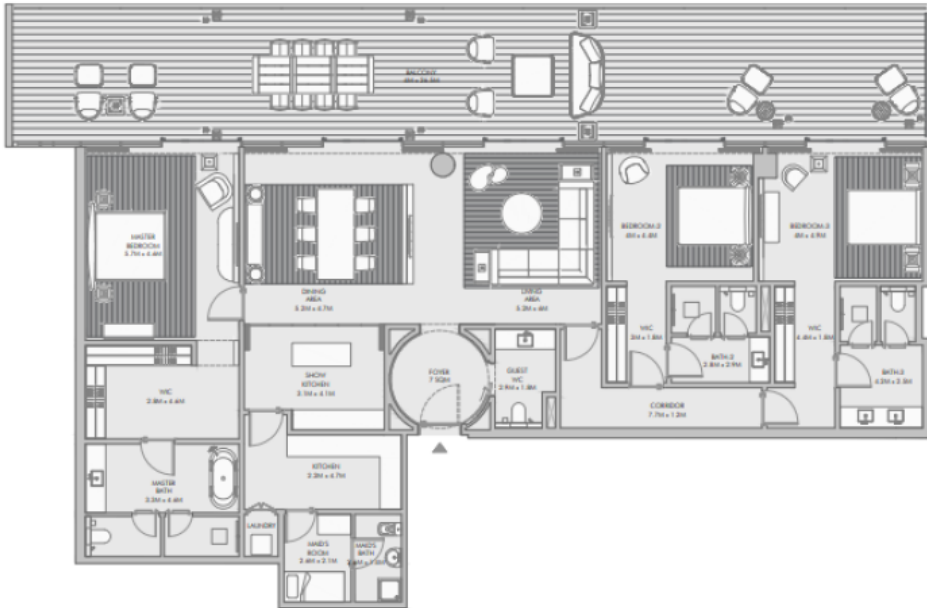
AED 23,000,000

2657 sqft / 247 m²

TO

AED 27,000,000

3373 sqft / 313 m²



Apartments

3 bedroom

FROM

AED 39,000,000

4872 sqft / 453 m²

TO

AED 41,000,000

5124 sqft / 476 m²



Apartments

4 bedroom

FROM

AED 51,000,000

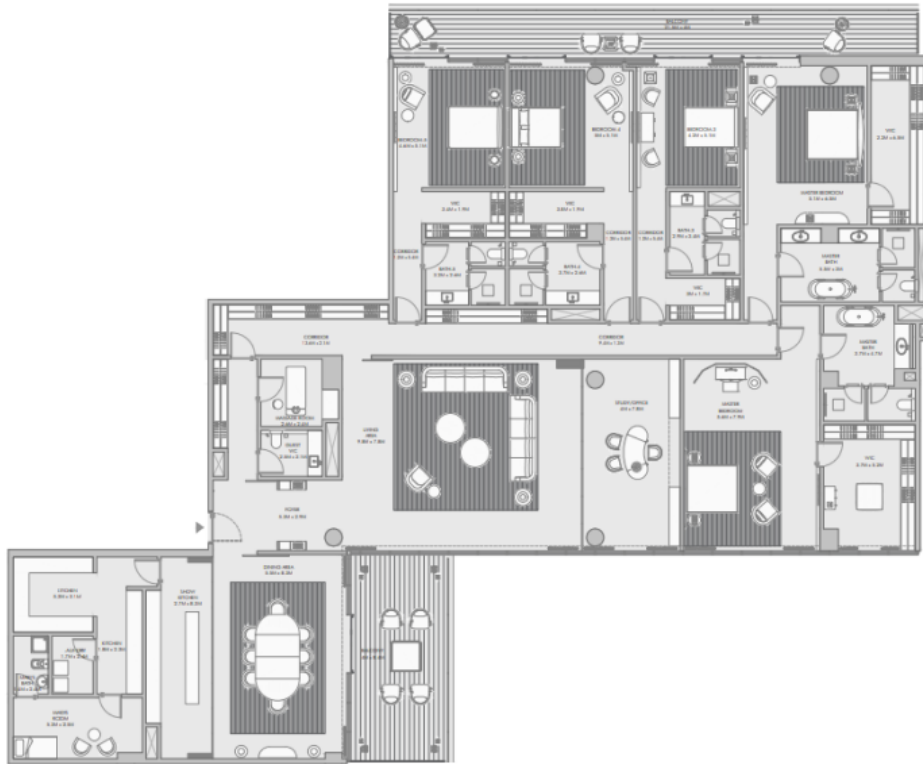
6323 sqft / 587 m²

TO

AED 57,500,000

7191 sqft / 668 m²

Typical units and prices

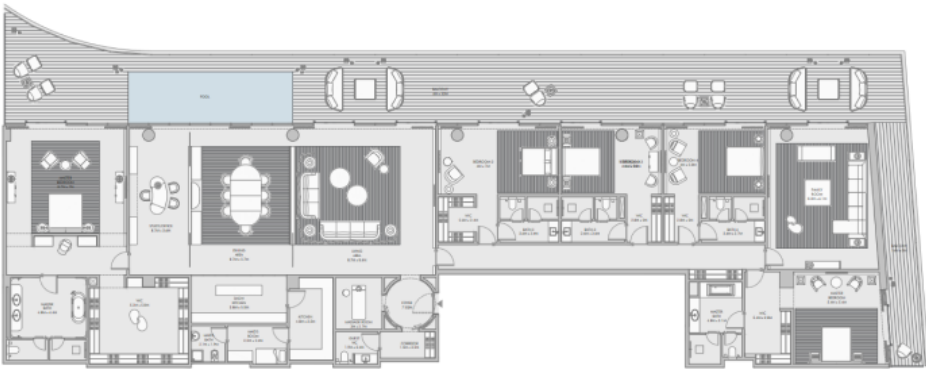


Apartments

5 bedroom

FROM
AED 68,000,000
8469 sqft / 787 m²

TO
No info
8472 sqft / 787 m²

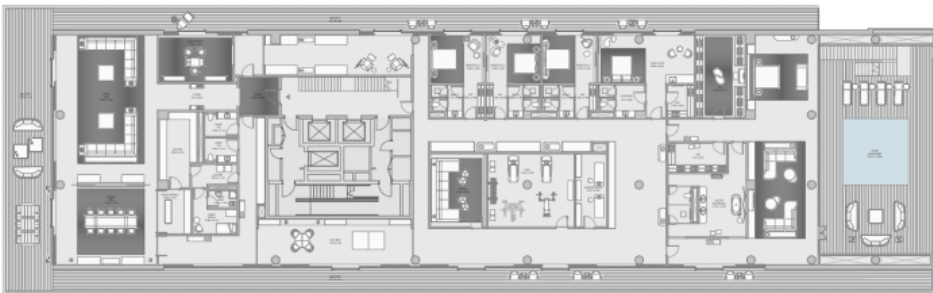


Penthouse

5 bedroom

FROM
AED 77,500,000
9664 sqft / 898 m²

TO
AED 93,500,000
11646 sqft / 1082 m²



Suite

5 bedroom

FROM
AED 340,500,000
30949 sqft / 2875 m²

TO
No info

Do you have any questions? Contact me.



Rustam Kakharov

Phone 971585869577
Email rustam@allegiance.ae
Instagram rus_kakharov

