

🕒 Completion - Q1 2024

# Creek Edge

Dubai Creek Harbour

EMAAR

Emaar



## Rustam Kakharov

Dubai, United Arab Emirates

🔑 Verified Agent

Phone 971585869577

Email rustam@allegiance.ae

Website


Instagram: rus\_kakharov

 WhatsApp


 Email



# Creek Edge

 Furnishing - Only  
kitchen

 Parking -

 Floors - 2B + G +  
40floors; 2B + G +  
20floors

 Service charge -  
22-23 AED/sqft

## Project general facts

Safe and private, set in the heart of nature - with the purest Creek views - this is CREEK EDGE.

The two elegant towers of 40 and 20 floors rise above the waterfront promenade of Creek Island, connected by a lushly landscaped leisure podium.

Creek Edge by Emaar is situated on Creek Islands beautiful beachfront promenade, this includes two beautiful skyscrapers. Creek Edge combines luxury seaside living with exquisite design flare to offer a unique waterfront experience. These premium 1 to 3 bedroom apartments will be handed to you directly from developers.

These residences have been meticulously crafted and created to make use of the stunning Creek views. Creek Edge is located north of Dubai Creek Harbour Island and is accessible by the Festival City and Ras Al Khor road, as well as the nearby Al Jaddaf floating bridge, which gives access to the island via a beautiful panoramic bridge across the canal.

## **Finishing and materials**

Every detail has been carefully considered in order to provide the best in modern city living. From the design of the living spaces to the crafting of each room, every material, fitting, and feature has been meticulously finished to fit the modern lifestyle of the most discerning customers.

## **Kitchen and appliances**

Unequipped kitchen

## **Furnishing**

No

## **Location description and benefits**

Dubai Creek Harbour is unquestionably the brightest star on Dubai's ever-expanding horizon. A destination of great vision, innovation and construction excellence, it will add to Dubai's magnificent skyline and further elevate the city's position as a world- leading metropolis of the future. Creek Island is located north of Downtown Dubai along the Dubai Creek.

The island boasts one of the most iconic vistas in the world, with stellar panoramas of Downtown Dubai's

ultramodern skyline - including the astonishing Burj Khalifa. Creek Island features a fully-integrated transport system so you can get around Dubai with ease.

The centerpiece of Dubai Creek Harbour is the breathtaking Dubai Creek Tower, set to surpass the Burj Khalifa as the tallest structure globally. This architectural marvel is designed by the renowned architect Santiago Calatrava and will serve as a symbol of Dubai's ambition and innovation.

Dubai Creek Harbour offers a diverse range of residential options, from luxurious waterfront apartments to contemporary villas. The residences boast stunning views of the Dubai skyline, the Creek, and the iconic tower.



# Architecture





# Interior





A detailed map of Dubai, United Arab Emirates, showing major roads, landmarks, and districts. The map is labeled in English and Arabic. Key locations include Dubai International Airport, Deira, Al Karama, Dubai Festival City, Al Khawaneej, Mirdif, International City, Warsan 3, Nad Al Sheba, Dubai Silicon Oasis, Al Quoz, and Burj Al Arab. A red pin marks a location in Dubai Festival City. A button in the bottom left corner says "Open location in Google Maps". The map data is dated 2024.

**Location**

Dubai International Airport  
مطار دبي الدولي

DEIRA  
ديرة

AL KARAMA  
الكرامة

DUBAI FESTIVAL CITY  
دبي فيستيفال سيتي

AL KHAWANEJ  
الخوانيج

MIRDIF  
مردف

INTERNATIONAL CITY

WARSAN 3  
ورسان 3

NAD AL SHEBA  
ند الشبا

DUBAI SILICON OASIS  
واحة دبي السيليكون

AL QUOZ  
القوز

Burj Al Arab  
برج العرب

Open location in Google Maps

Map data ©2024

**Location**

Dubai International Airport  
مطار دبي الدولي

DEIRA  
ديرة

AL KARAMA  
الكرامة

DUBAI FESTIVAL CITY  
دبي فيستيفال سيتي

AL KHAWANEJ  
الخوانيج

MIRDIF  
مردف

INTERNATIONAL CITY

WARSAN 3  
ورسان 3

NAD AL SHEBA  
ند الشبا

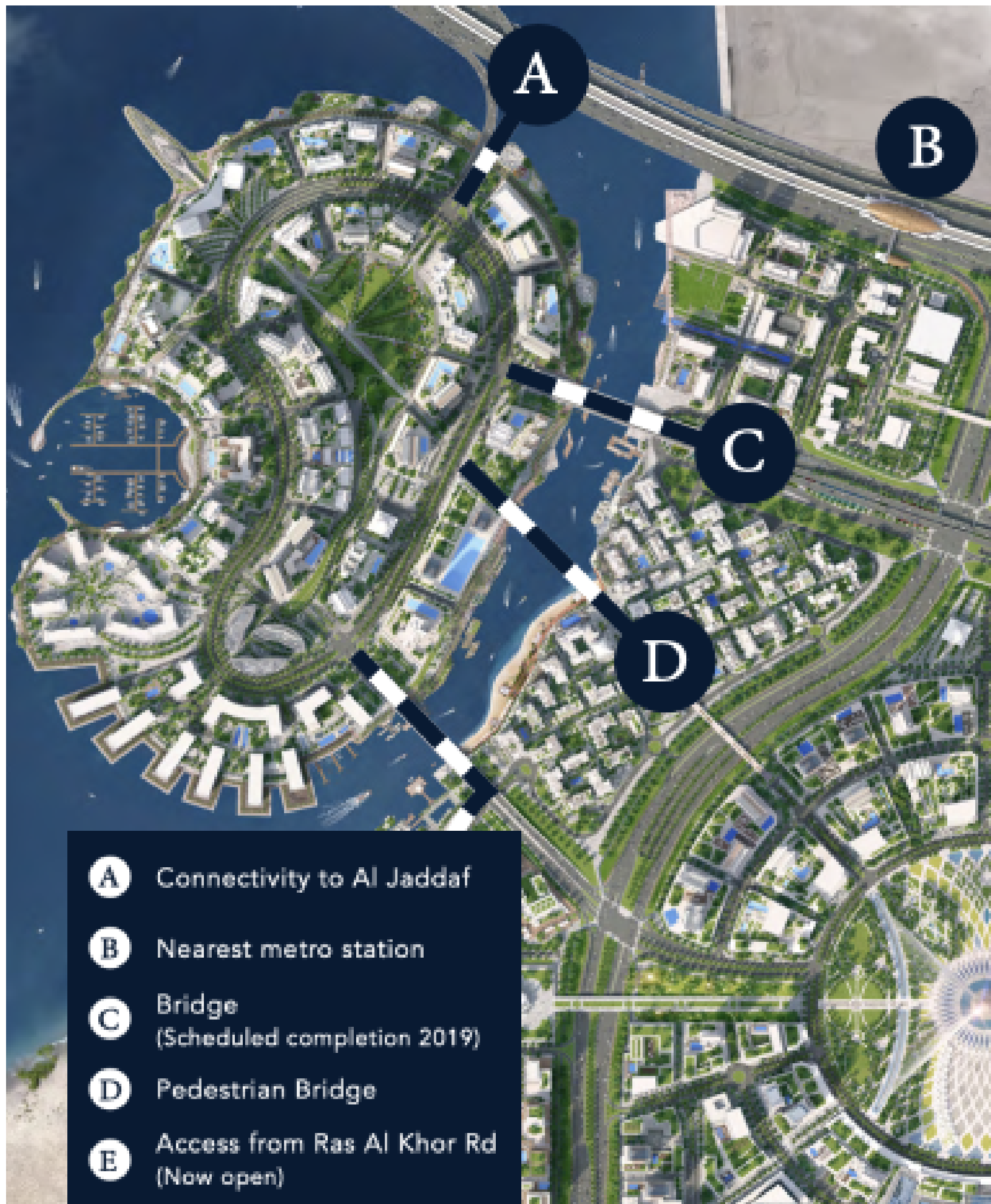
DUBAI SILICON OASIS  
واحة دبي السيليكون

AL QUOZ  
القوز

Burj Al Arab  
برج العرب

Open location in Google Maps

Map data ©2024





# Facilities



**INFINITY EDGE SWIMMING POOL**

Visualisation from developer



**ZEN & YOGA AREAS**

Image for general understanding



**BARBECUE AREAS**

Image for general understanding



**FULLY EQUIPPED GYM**

Image for general understanding



**CHILDREN'S PLAY AREAS**

Image for general understanding

# Payment plan



## Payment plan

20% payment	On booking
50% payment	During construction
30% payment	Upon Handover

Condition for the unit resale	Not specified
-------------------------------	---------------



# Typical units and prices



Apartments

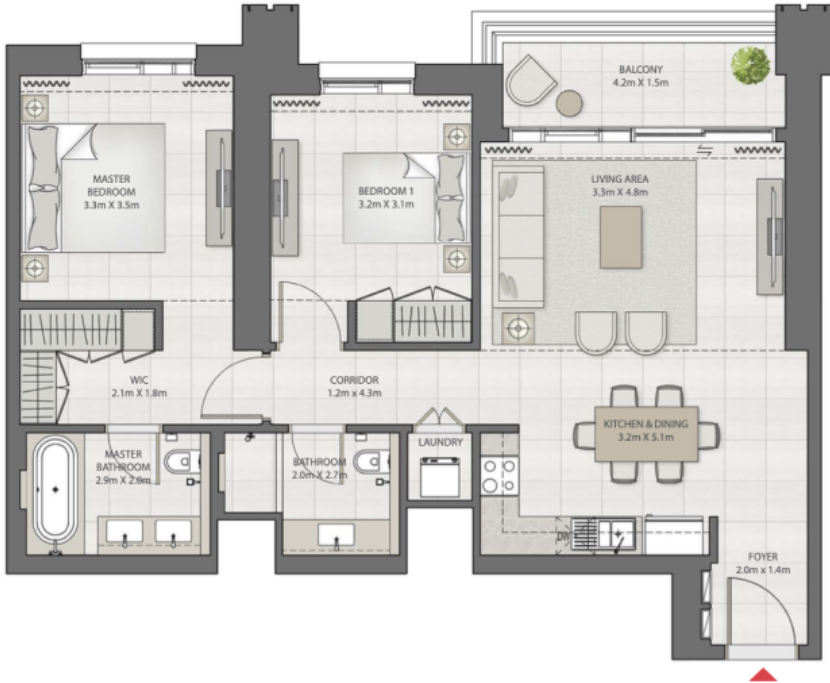
1 bedroom

FROM

No info

TO

No info



Apartments

2 bedroom

FROM

No info

TO

No info



Apartments

3 bedroom

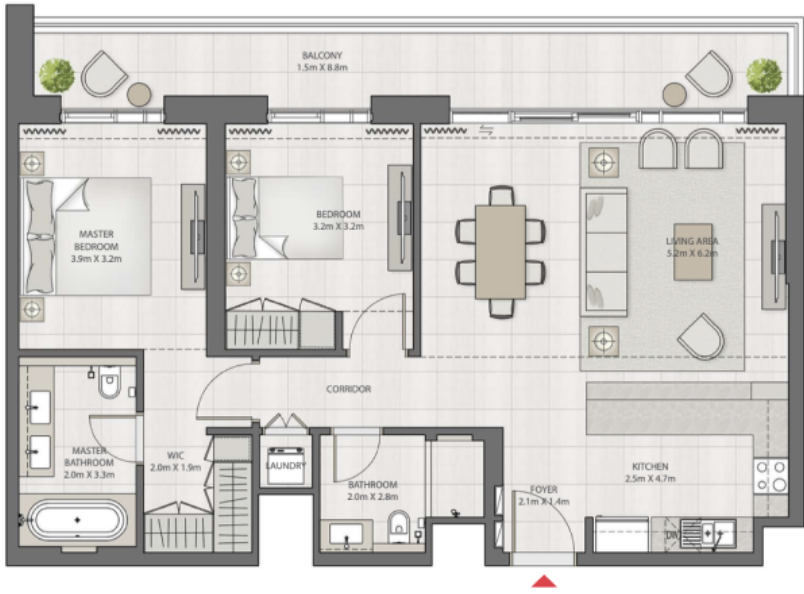
FROM

No info

TO

No info

# Typical units and prices



Townhouse

2 bedroom

FROM

No info

TO

No info



Townhouse

3 bedroom

FROM

No info

TO

No info



Do you have any questions? Contact me.



Rustam Kakharov

Phone 971585869577  
Email rustam@allegiance.ae  
Instagram rus\_kakharov

